



01



- ❑ Anti-Reflux Valve reduces the risk of post-ERCP cholangitis¹⁾
- ❑ Provide longer patency
- ❑ e-PTFE covered stent providing excellent biocompatibility
- ❑ Excellent flexibility and conformability



- Anti-reflux valve prevents the reflux of duodenal contents in the major papilla

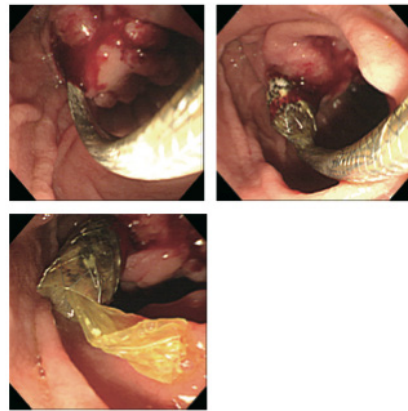
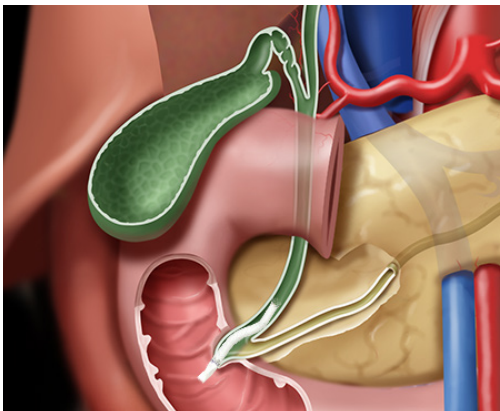


- Flared bare stent in the proximal part prevents migration

Delivery System 8Fr, 50/180cm

Ordering NO. First two** : Diameter(mm) / Last two** : Length(cm)

Ordering NO.		Size	
OTW	TTS	Diameter	Length
MVP****0	MVE****0	8, 10	4, 5, 6, 7, 8, 9, 10, 11, 12



- Biliary stent insertion could disrupt the function of the sphincter of Oddi, preventing reflux of duodenal contents. Therefore, it might increase the risk of cholangitis, induced by post-ERCP. In order to resolve concern of the reflux, EGIS M-valve stent was invented.
- The patency of the M-valve stents was significantly longer compared with conventional SEMSts. (407 vs 220 days, P = .013).

Reference¹⁾: Yun Nah Lee, Jong Ho Moon et al (2016), Effectiveness of a newly designed antireflux valve metal stent to reduce duodenobiliary reflux in patients with unresectable distal malignant biliary obstruction: a randomized, controlled pilot study (with videos), *Gastrointestinal endoscopy* Volume 83, No. 2

Stent Type	OTW(Over The Wire)				
	Ordering NO.	Stent		Delivery System	
		Diameter(mm)	Length(cm)	Profile(fr.)	Length(mm)
M-Valve (Anti-Reflux Valve Stent)	MVP08040	8	4	8	500
	MVP08050		5		
	MVP08060		6		
	MVP08070		7		
	MVP08080		8		
	MVP08090		9		
	MVP08100		10		
	MVP08110		11		
	MVP08120		12		
	MVP10040		10		
	MVP10050	5			
	MVP10060	6			
	MVP10070	7			
	MVP10080	8			
	MVP10090	9			
	MVP10100	10			
	MVP10110	11			
	MVP10120	12			

Stent Type	TTS(Through The Scope)				
	Ordering NO.	Stent		Delivery System	
		Diameter(mm)	Length(cm)	Profile(fr.)	Length(mm)
M-Valve (Anti-Reflux Valve Stent)	MVE08040	8	4	8	1800
	MVE08050		5		
	MVE08060		6		
	MVE08070		7		
	MVE08080		8		
	MVE08090		9		
	MVE08100		10		
	MVE08110		11		
	MVE08120		12		
	MVE10040		10		
	MVE10050	5			
	MVE10060	6			
	MVE10070	7			
	MVE10080	8			
	MVE10090	9			
	MVE10100	10			
	MVE10110	11			
	MVE10120	12			